

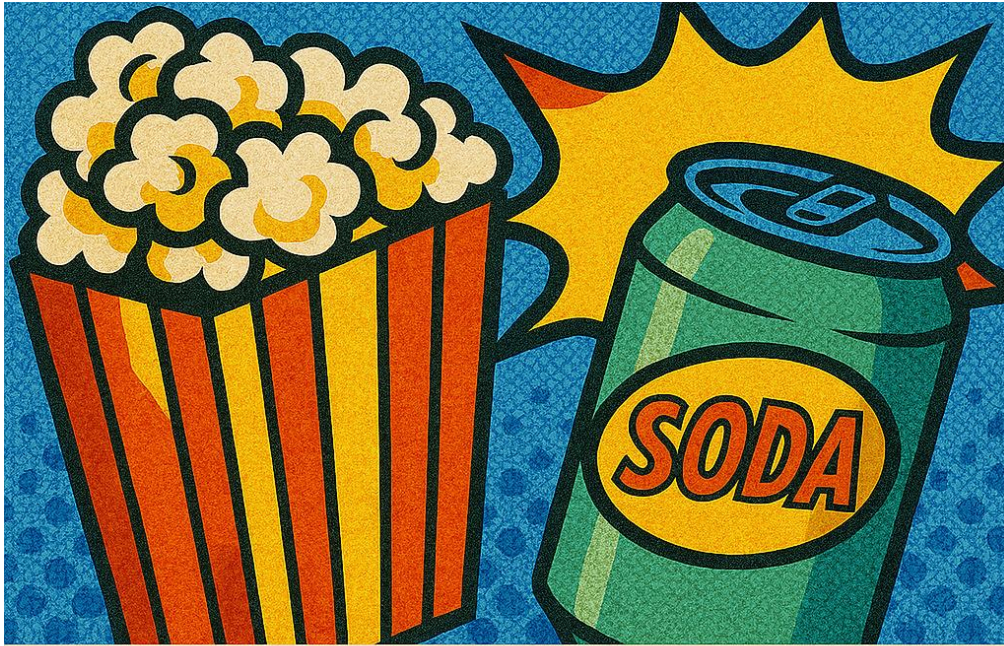
Impressionism

Uses light, loose brushstrokes, and soft colours to capture fleeting moments—think outdoor scenes at sunrise with shimmering light and gentle movement.



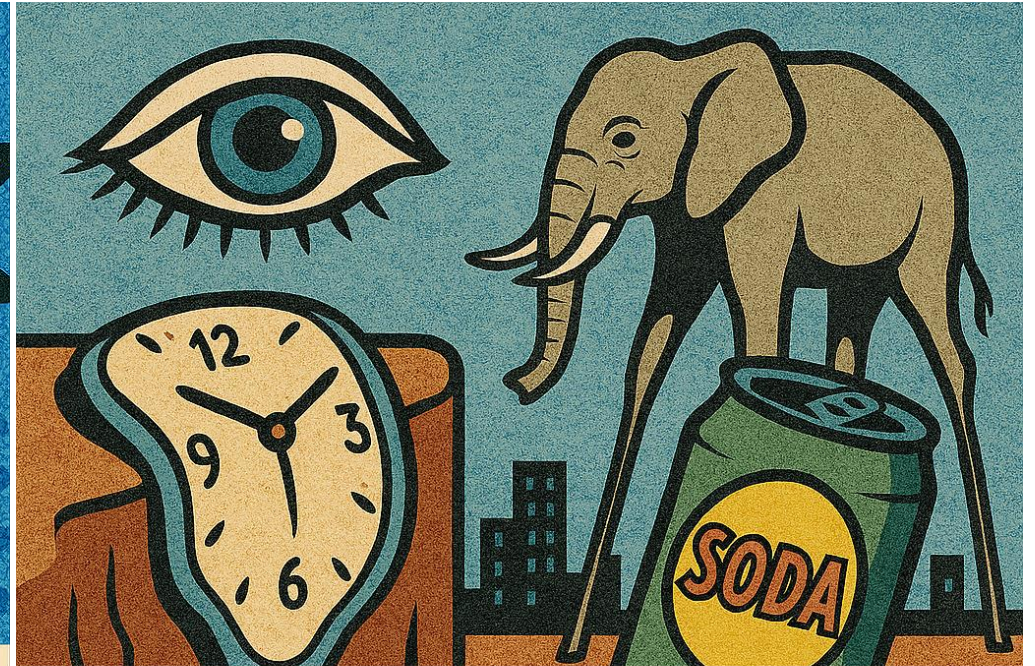
Cubism

Breaks objects into geometric shapes and rearranges perspectives. Faces, buildings, and scenes might look fractured but intentional.



Pop Art

Bold, vibrant colours with comic-style outlines and everyday objects. Think advertisements, celebrities, or snacks reimagined as high art.



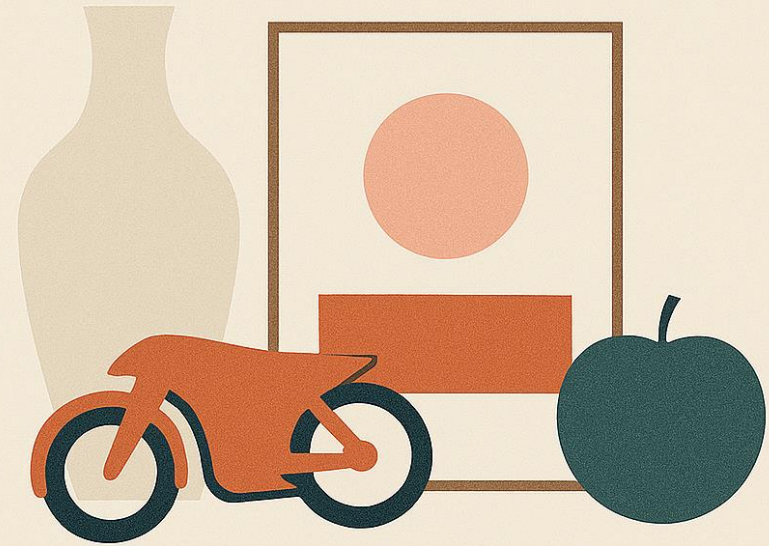
Surrealism

Dream-like visuals with bizarre or impossible combinations—melting clocks, floating eyes, giant animals walking through cities.



Futurism

Dynamic motion and bold shapes that emphasize speed, machinery, and modern technology—often abstract and powerful.



Minimalism

Stripped-down designs using simple forms, limited colours, and lots of negative space. Every element is intentional.



Street Art / Graffiti

Vibrant, rebellious, and full of personality—incorporates tagging, murals, stencils, and bold visuals with urban flair.



Art Deco

Elegant symmetry, metallic colours, and geometric patterns—feels luxurious and retro, like a 1920s sci-fi skyline.



Expressionism

Emotionally charged visuals using exaggerated colours, distorted figures, and bold strokes to reflect inner feelings.



Anime Style

Clean lines, expressive faces, and dramatic backgrounds—often features large eyes, action poses, and stylized proportions.